

Regenerate

By Mary-Anne Mace



Nature is both destructive and creative. When my home town of Christchurch, New Zealand was struck by a series of devastating earthquakes beginning September 4th 2010, the entire CBD was cordoned off from public access as the many damaged and collapsed buildings were demolished or repaired. Large swaths of residential Christchurch were left ruined and uninhabitable, forcing people from their beloved riverside houses and gardens to more seismically stable ground. As we all struggled to work through the extraordinary shock that nature had unleashed upon us, it occurred to me that nature would also provide the first pioneer of those demolished building sites, collapsed buildings and abandoned houses; in the form

of weeds. Never before in my life has a weed been so welcome. In a matter of weeks weeds began to populate once well kept streetscapes in all their prolific glory and abandon. This lace shawl celebrates the raw beauty of nature, both destructive and creative, in the form of the weed. Wrap it around you and contemplate your relationship with the natural world, and whatever experiences it serves up to you.

In this shawl I use Estonian lace stitches to depict weeds re-populating the urban landscape, tentatively at first with a Creeping Vine, and then transforming with prolific abandon into the Riotous Vine. Finally, the edge of the shawl depicts what I consider to be the Crowning Glory of all weeds – the thistle!

FINISHED MEASUREMENTS

Length at centre back: 89 cm
Width: 216 cm

MATERIALS

Handspun Shawl

Treetops merino top; maroon-purple; Colourway: Jamberry; 4.23 ounces, (120 gms);
<http://www.treetopscolors.com.au/>

Commercial yarn alternative: Approximately 900 metres of lace weight yarn.

Yardage of final yarn

900 metres approx.
Wraps per inch: 32 wpi
Drafting Method: Worsted
Ply: 2 ply

Recommended Needle Size

One 3.75 mm (UK no.9) circular needle, at least 100cm in length

Gauge

22 sts/34 rows = 10 cm in stockinette stitch, after blocking

24 sts/32 rows = 10 cm in pattern stitch, after blocking

PATTERN NOTES

The motifs in this shawl were inspired by stitch patterns from *Knitted Lace of Estonia, Techniques, Patterns and Traditions*, by Nancy Bush (2008). The Riotous Vine chart is derived from Hagakiri 2, and the Creeping Vine chart is a modification of that. The Crowning Glory chart is a modification of two edge stitches and some fortuitous mistakes.

If you wish to use stitch markers to identify the beginning and end of blocks of repeating pattern,

please note these markers will need to move on some rows when working decreases.

You can make a smaller (or larger) shawl by NOT knitting chart 2a and 2b (Creeping Vine Transition) and 3a and 3b (Creeping Vine Right and Left) a second time through. Instead, work row 73, the transitional row to chart 4a and 4b (Riotous Vine Left and Right). For a larger shawl, repeat charts 2a and 2b a third time, charts 3a and 3b a third time, then work transitional row 73 followed by chart 4a and 4b.

Nupps (optional): 7 stitch nupps are used in this shawl. If you find nupps too challenging, simply omit them altogether and treat the nupp stitch as a regular knit stitch. Knitting should be fun, not frustrating!

7 stitch nupp: Working very loosely, working into the next stitch as follows: (k1, yo) 3 times, k1 once more. 1 st is increased to 7 sts. On the returning WS purl row, purl all 7 sts together. To successfully purl the nupp sts together they must be knit *loosely* on the preceding knit row.



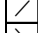


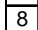

Working from the charts and pattern repeats:

The shawl has ten charts. The shawl begins with a small knitted tab, and grows outward from the centre of the neck edge. The left side of the shawl is a mirror image of the right side. Some yarn overs do not have accompanying decreases, which push the chart edges out by one cell.

WS (purl) rows are not included in the charts. Knit the garter edge stitches, and purl across to the other edge of the shawl, knit the garter edge stitches. When you encounter a nupp stitch, purl all 7 loops together.

The numbers in boxes represent the number of consecutive knit st from one object in a chart to another, including a bold repeat line. (so you don't have to count them yourself!)

key:

	knit on RS
	yo
	k2tog
	ssk
	sk2p
	nupp
	consecutive k st count

Abbreviations

yo: yarn over needle to make a stitch
 k2tog: knit 2 together
 ssk: slip, slip, knit 2 together
 sk2p: slip 1, k2tog, pass slipped st over

nupp: (k1, yo) 3 times, k1 once more (all into one stitch) 1 to 7 nupp

PATTERN

Garter Tab

Cast on 2 sts. Knit 6 rows.

Next row [RS]: K2, pick up and knit 3 sts in the garter ridges along the side of the tab; pick up and knit 2 sts in the cast on edge. 7 sts.

Shawl Body:

Creeping Vine Startup

Row 1 [RS]: K2, yo, k1, yo, pm, k1, pm, yo, k1, yo, k2. 11 sts.

Rows 2, 4, 6, 8 [WS]: K2, p to last 2 sts, k2.

Row 3 [RS]: K2, yo, k3, yo, k1, yo, k3, yo, k2. 15 sts.

Row 5 [RS]: K2, yo, k5, yo, k1, yo, k5, yo, k2. 19 sts.

Row 7 [RS]: K2, yo, k7, yo, k1, yo, k7, yo, k2. 23 sts.

Body of Shawl

Row 1 [RS]: K2, yo, work Chart 1a across to center st, yo, k1, yo, work Chart 1b across to last 2 sts, yo, k2.

Row 2 [WS]: K2, p to last 2 sts, k2.

Work as set until Charts 1a and 1b are complete. 103 sts.

Next row [RS]: K2, yo, work Chart 2a across to center st (working Pattern Repeat once), yo, k1, yo, work Chart 2b across to last 2 sts (working Pattern Repeat once), yo, k2.

Work as set until Charts 2a and 2b are complete. 127 sts.

Next row [RS]: K2, yo, work Chart 3a across to center st (working Pattern Repeat twice), yo, k1, yo, work Chart 3b across to last 2 sts (working Pattern Repeat twice), yo, k2.

Work as set until row 72 (yes, 72; this is not a typo!) of Charts 3a and 3b is complete. 183 sts.

Continue as set, working Rows 37-48 of Charts 2a & 2b again (working Pattern Repeat 3 times). 207 sts.

Work Charts 3a & 3b once more until row 73 is complete. 267 st.

Work Charts 4a & 4b, working repeat section 12 times across. 347 st.

Work Charts 5a & 5b, working repeat section 16 times across. 457 st.

Bind off loosely as follows: K1; *k1, slip the 2 sts back to the left needle, and knit them together ktbl; rep from * until 1 st rem; Cut yarn and pull through final st to secure.

Finishing:

Weave in ends and block, being careful to keep the long (neck) edge straight and pinning out the point of each thistle motif.

About the Designer:

Mary-Anne Mace lives in Christchurch New Zealand, and belongs to the Christchurch Guild of Weavers and Spinners. She can be found on Ravelry at:

<http://www.ravelry.com/designers/mary-anne-mace>

Or at <http://m-amace.blogspot.co.nz/>

This pattern first appeared in Knitty.com:

<http://knitty.com/ISSUEss14/index.php>

Contact the designer at: maryannemace@gmail.com



4
Chart 1A, Creeping Vine Startup right

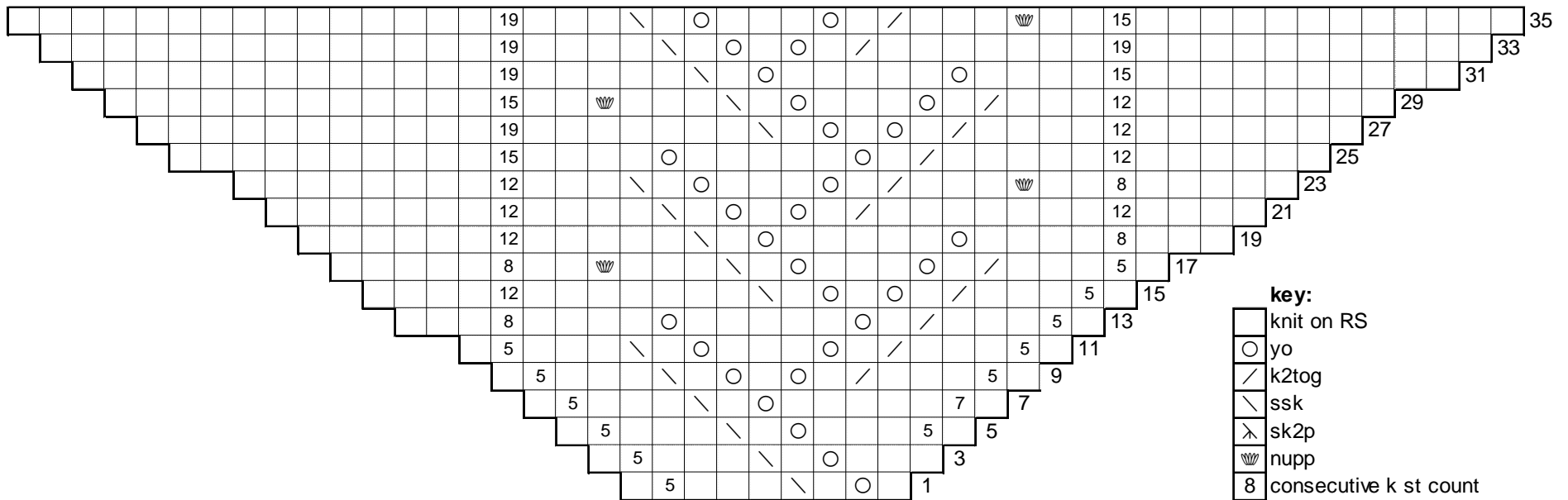


Chart 1B, Creeping Vine Startup Left

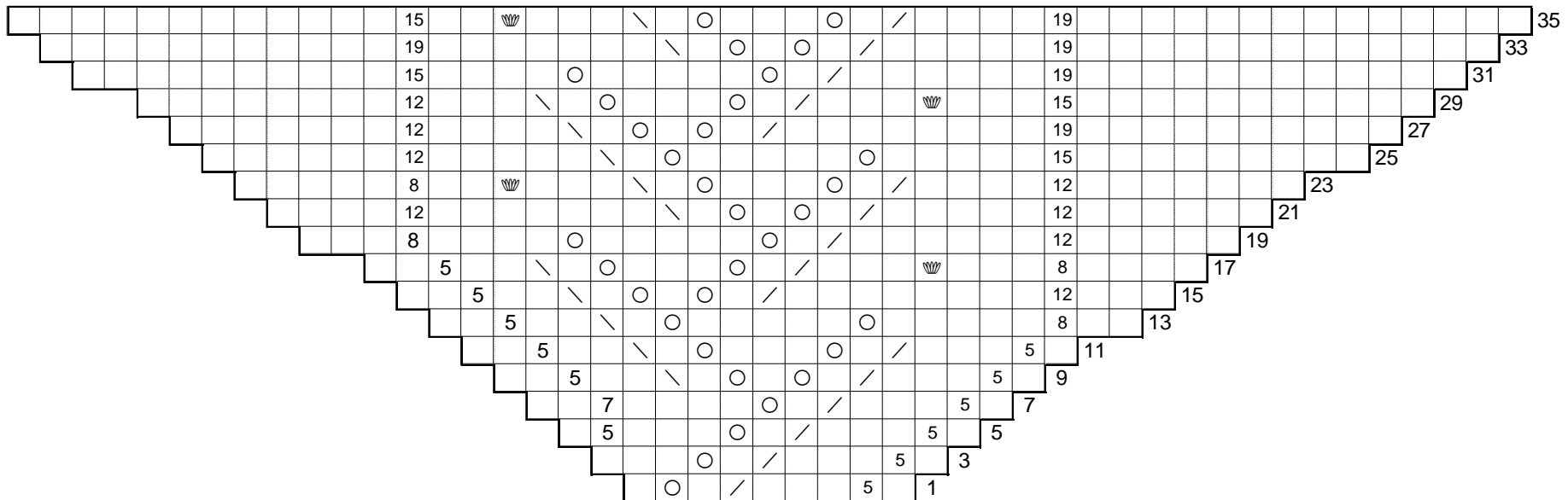


Chart 2a Creeping Vine Transition Right

5

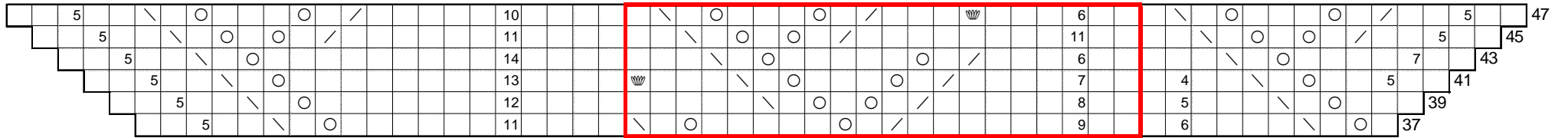


Chart 2b Creeping Vine transition Left

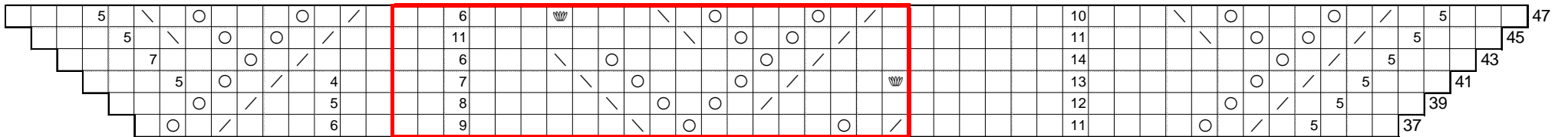
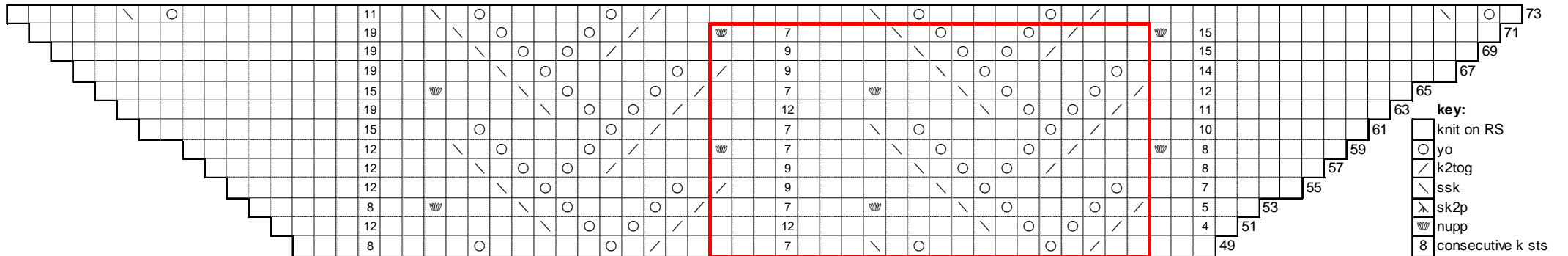


Chart 3A, Creeping Vine right



- key:**
- knit on RS
 - yo
 - / k2tog
 - \ ssk
 - X sk2p
 - ☞ nupp
 - 8 consecutive k sts

Chart 3B, Creeping Vine left

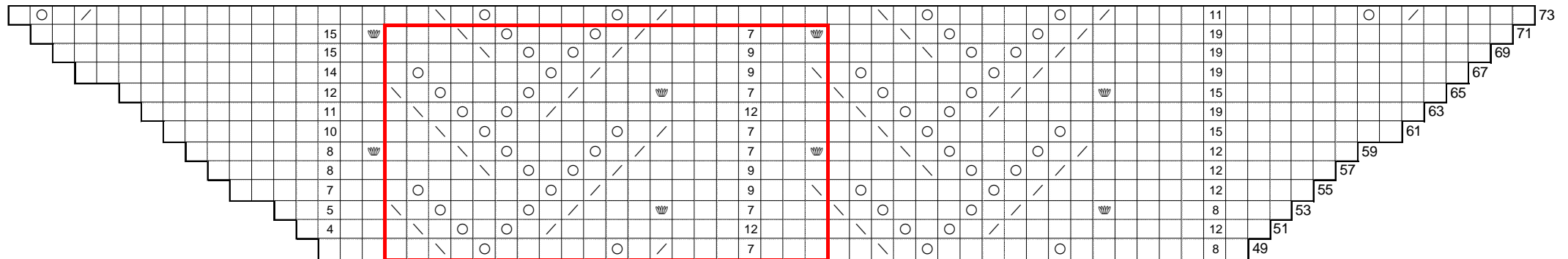


Chart 4a Riotous Vine right

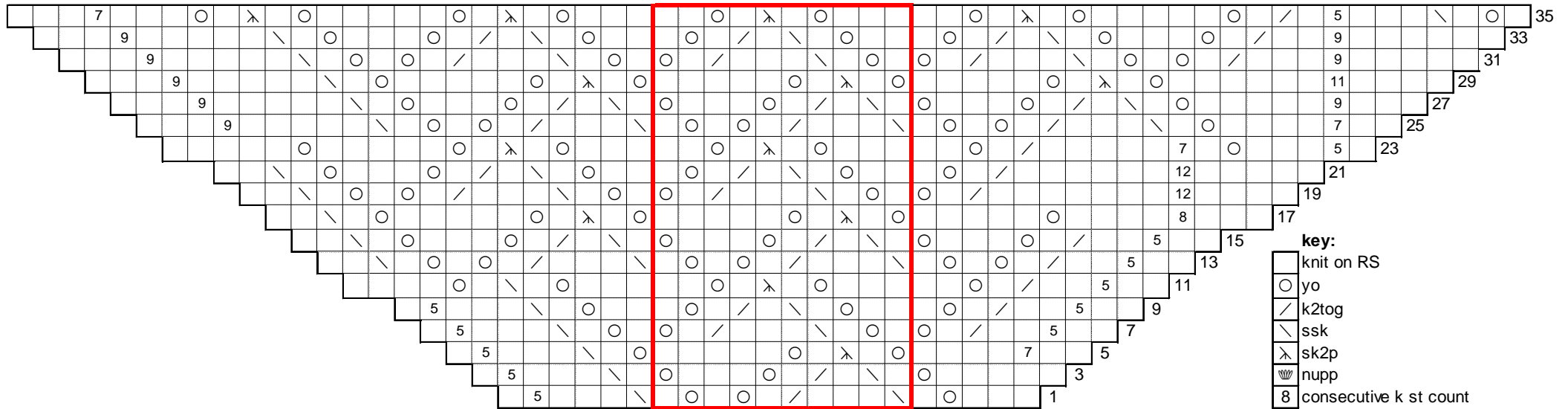


Chart 4b Riotous Vine left

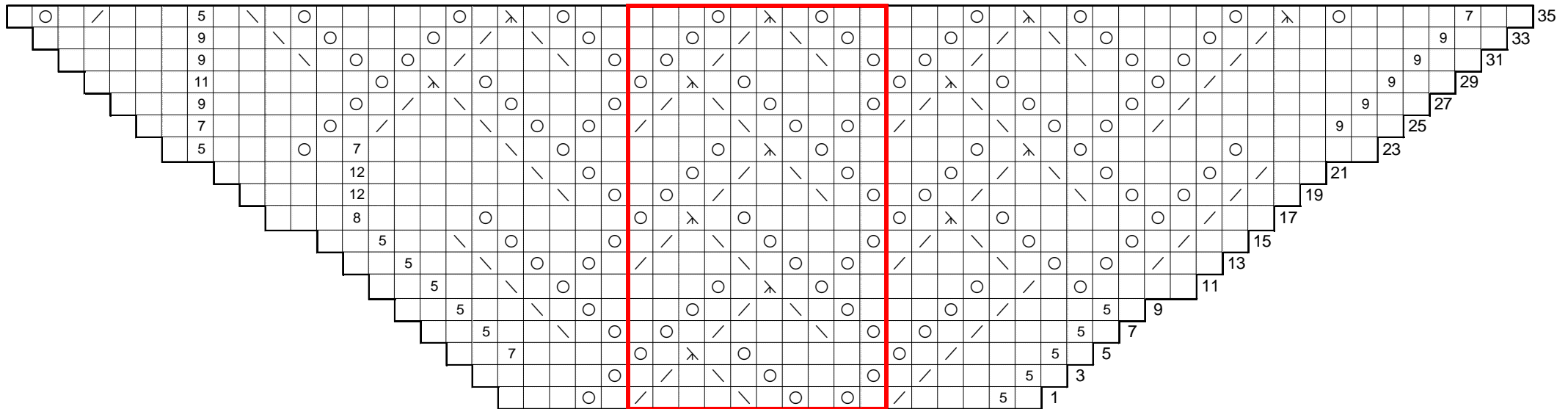
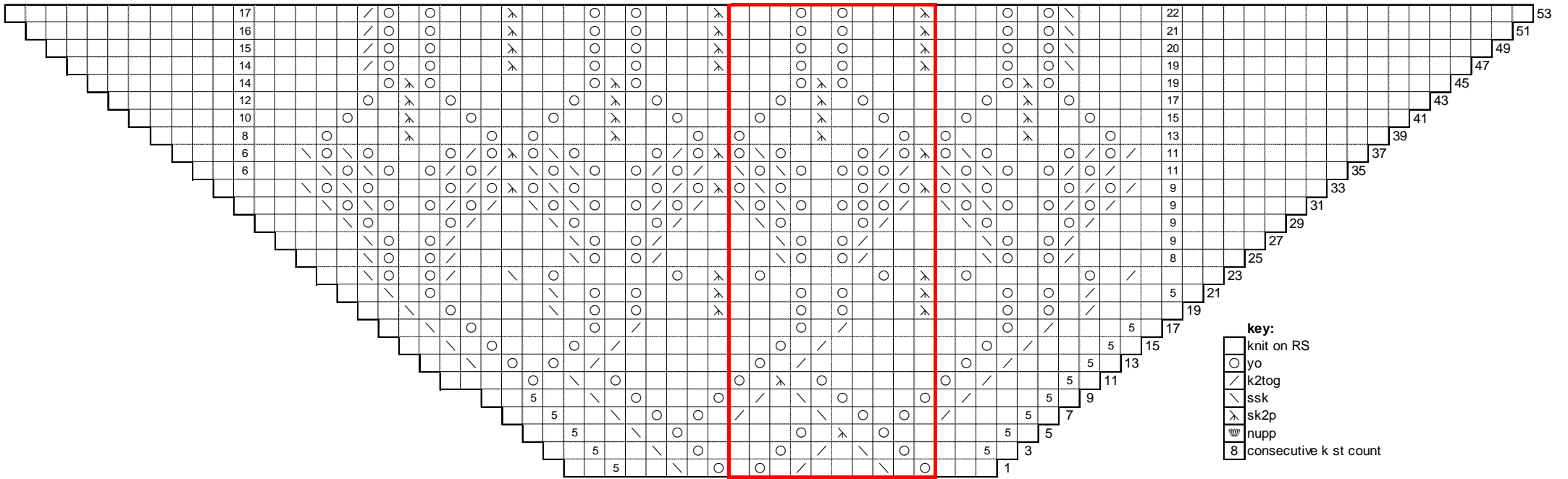


Chart 5A, Crowning Glory Right



- key:**
- knit on RS
 - yo
 - / k2tog
 - \ ssk
 - ↗ sk2p
 - nupp nupp
 - 8 consecutive k st count

Chart 5B, Crowning Glory left

